



OVERVIEW

Being situated opposite the entrance to Ian Woosnams signature 18 hole "championship" golf course, Razlog Golf & Ski is set create a modern, relaxed community environment. The complex is being designed by internationally renowned architects Aukett Fitzroy Robinson, benefiting from a modern Ski-Build design, landscaped gardens, underground parking and a state of the art hi-tech home management system. The main design concept is to maximise each apartment's access to natural light and stunning mountain views. Furthermore each apartment will have the use of the latest technology to ensure energy efficiency and low-maintenance. This project has been nominated for a Bentley Property Award (2007).



KEY FEATURES

- ✓ Advanced economical heating system.
- ✓ Reception area with 24hr concierge.
- ✓ Children's plunge pool.
- ✓ Large indoor swimming pool.
- ✓ Spa centre : Jacuzzi, Sauna, Steam room.
- ✓ Elevators servicing all apartments
- ✓ Underground parking
- ✓ Private store rooms
- ✓ Gourmet restaurant
- ✓ Terrace bar
- ✓ Designer Bar with atrium feature
- ✓ Boutique shops

LOCALITY

Razlog is 6km away from Bulgaria's newest ski resort, Bansko. This bustling resort offers the atmosphere of an authentic Bulgarian village in the Pirin mountain foothills as well as state of the art skiing facilities and excellent alpine conditions from December through to April. Whilst Razlog Golf & Ski will feature all of the facilities you might expect from a modern residential development ie restaurant, bar, shops, gym and a swimming pool, it is also conveniently situated opposite the entrance to the Pirin Golf & Country Club.

The addition of a centre of golfing excellence to Bansko's nearby ski resort will raise the area's profile as a year round tourist destination.

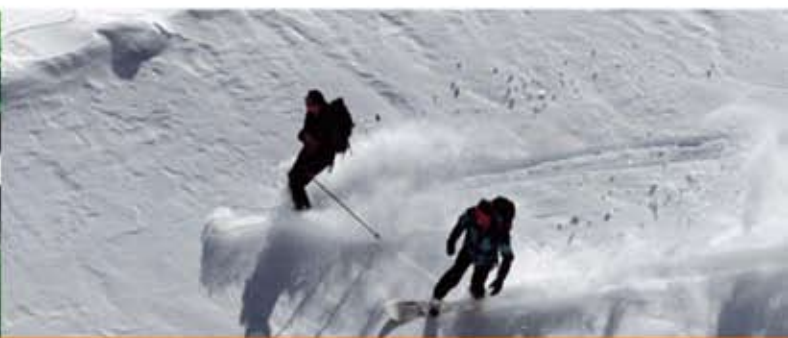
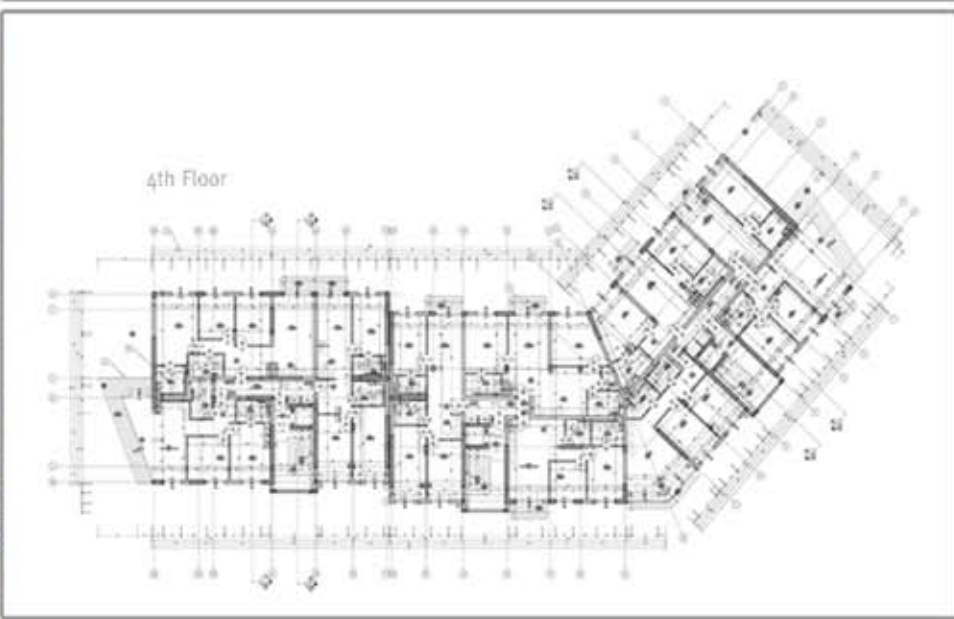
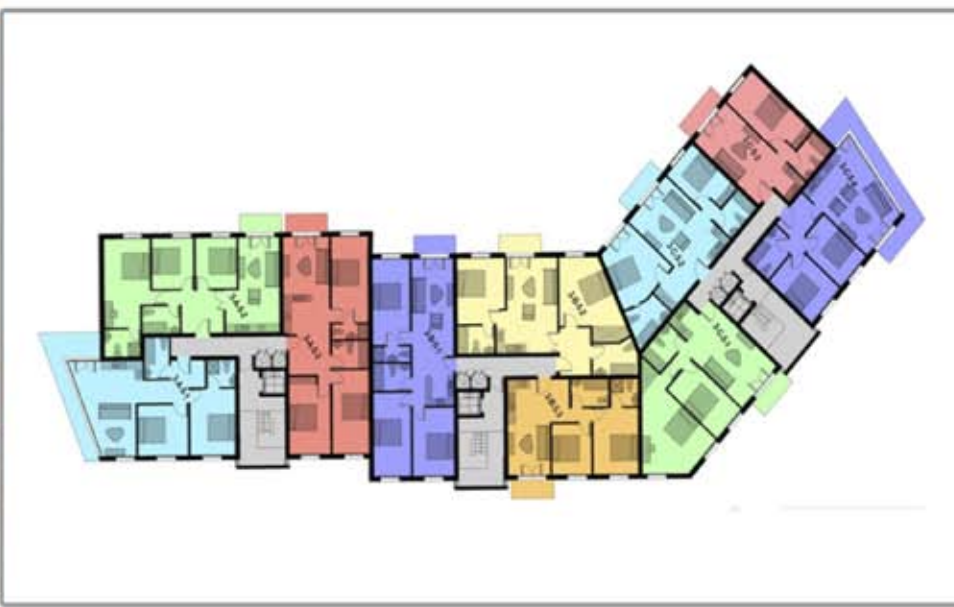


This brand new development designed by international architects Aukett Fitzroy Robinson, will feature 330 studio, 1, 2, and 3 bedroom apartments and a wide range of modern facilities.

PRICES & AVAILABILITY - SAMPLE

Apt No	Apt Type	Apart.	Balcony	Common Parts	Total Living Area	GBP Incl VAT
GROUND						
1-A-G-1	Studio	27.00	3.50	4.05	31.05	£31,205
1-A-G-2	Studio	28.00	3.50	4.20	32.20	£32,361
1-A-G-4	Studio	28.00	4.50	4.20	32.20	£32,361
1-A-G-6	Studio	27.00	3.50	4.05	31.05	£31,205
1-A-G-7	1-bed	33.00	2.50	4.95	37.95	£38,140
FIRST						
1-A-1.1	2-bed	58.00	11.50	10.43	79.93	£80,325
1-A-1.2	2-bed	60.00	4.00	9.60	73.60	£73,968
1-A-1.3	2-bed	55.00	4.00	8.85	67.85	£68,189
1-A-1.4	1-bed	34.00	4.00	5.70	43.70	£43,919
SECOND						
1-A-2.1	2-bed	69.00	21.00	13.50	103.50	£104,018
1-A-2.2	2-bed	60.00	15.00	11.25	86.25	£86,681
1-A-2.3	2-bed	55.00	4.00	8.85	67.85	£68,189
1-A-2.4	1-bed	34.00	4.00	5.70	43.70	£43,919

FLOORPLANS



FLOORPLANS

