



OVERVIEW

A stunning selection of 1, 2 and 3 bedroom townhouses and 3 bed villas. Rising approximately 600 feet above the sea this spectacular hillside development overlooks the panoramic scenery of Rodney Bay, Pigeon Point and Martinique. From this single point you will also be captivated by views of both the Caribbean Sea and Atlantic Ocean, and a bird's eye view of the Beausejour Cricket Stadium, one of the host venues of the World Cup Cricket 2007. Ocean Breeze is set on 3.4 acres of tropical vegetation and the 30 townhouses are built on the peak of Mount Layau. For those seeking the privacy and exclusivity of a luxury detached villa, homes at OceanBreeze offer spectacular views, peace and tranquility and a glorious tropical setting. Each detached villa is designed in a distinctive Mediterranean Andalusian style with great emphasis put on quality, elegance and finish. Plot sizes are very generous and are typically between a quarter and one third acre in size. All villas come with the option of a private swimming pool with a variety of designs and sizes to choose from. A heated spa can also be added if required.

Ocean Breeze Villas
Phase 1 - Site Plan



KEY FEATURES

- ✓ On site facilities
- ✓ Communal pool
- ✓ Clubhouse & amenities
- ✓ Secure entry
- ✓ Shopping area
- ✓ Sports facilities
- ✓ Parking spaces

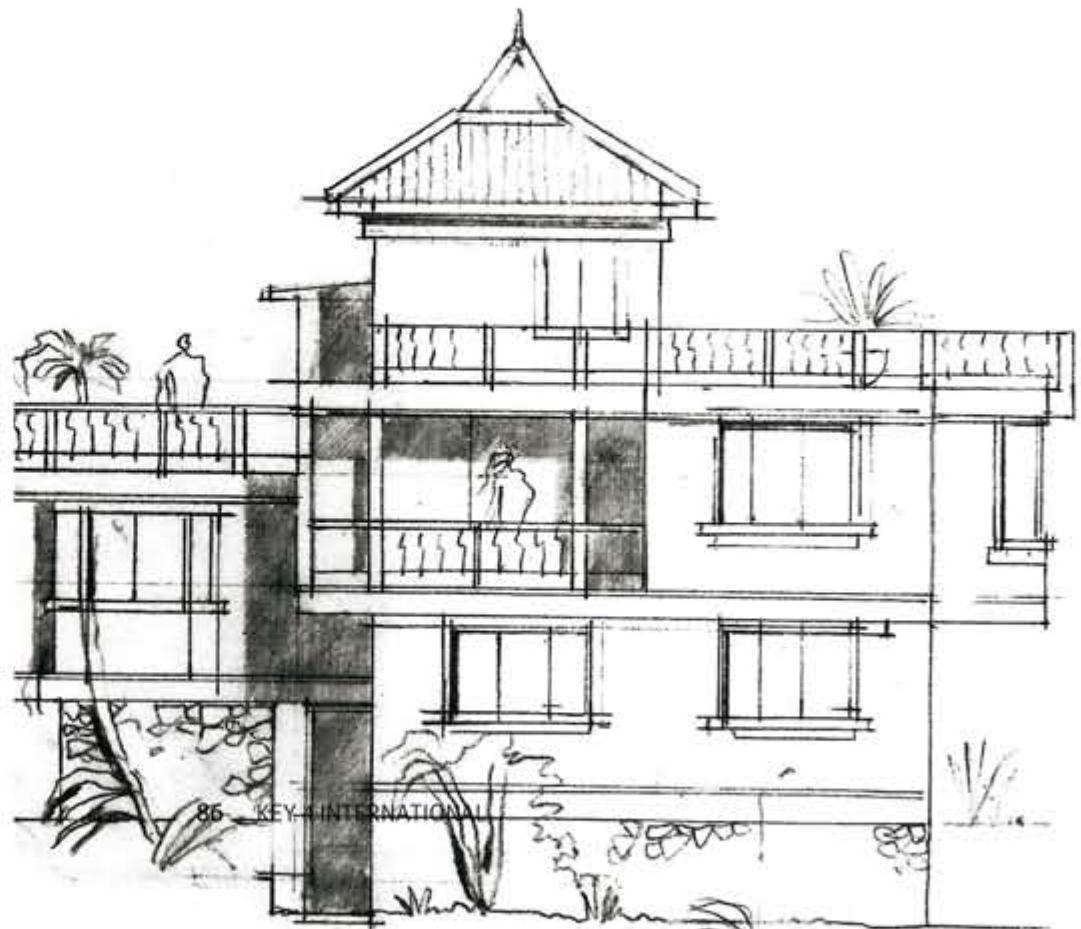
LOCALITY

The Eastern Caribbean region is one of the most famous tourist destinations in the world, comprising a chain of tropical islands running between North and South America and east of Central America. The region is divided into two major zones namely the Leeward Islands (Greater Antilles) and Windward Islands (Lesser Antilles) which are located north and south respectively. St. Lucia falls into the Windward group being the second largest, located 21 miles south of Martinique and 26 miles north of St. Vincent. More precisely, it lies between 60° 53' and 61° 05' West longitude and 13°43' and 14°05' North latitude. St. Lucia measures approximately 27 miles in length and 14 miles in width, with a land area of 238 square miles (616 sq. km).

PRICES AND AVAILABILITY

OCEAN BREEZE - AVERAGE PRICES		
Type	Sq.m.	Pounds
Villa	From: 130 sq.m.	From: £ 249,915

Including VAT



FLOOR PLANS

