

Residential Complex Queens Court Bangalore

Head Office
28th Floor, Gherkin Tower
London EC3A 8BF
T: +44 (0) 8456 20 10 10
E: info@key4india.com
W: www.key4india.com



OVERVIEW

An assortment of spacious 3 bed apartments in a sought after emerging area in India. Bangalore is home to an influx of technology firms, taking advantage of the highly qualified work force. With steady capital appreciation being experienced in recent years, Queens Court is perfectly located to take advantage of the rental potential which the predicted economic boom will surely bring. Situated in the Garden City of Bangalore, Queens Court epitomises the modernity which is synonymous with the new Asian Tiger that is India.



Peaceful, serene and built to western standards, the development is located close to the outer ring road and in the vicinity of BMIC road, set away from the din and pollution of city life yet near enough for a convenient drive. With 30 minutes commute to India's Silicon Valley and local amenities of spa, leisure centres and shopping parades, the investment potential of this development is equivalent to the best hot spots around the world. From £35 per square foot makes this makes for a great investment.

“Unlocking the emerging markets”

LOCATION

Situated inland and at an altitude of 3000 feet above sea level, Bangalore was discovered by the British Colonial rulers of India. Benefiting from numerous lakes and lush green cover this former Retirement area is now a bustling metro and is home to millions who have relocated due to the booming local economy. Bangalore is the capital of Karnataka. With its salubrious climate, tree-lined avenues, trendy downtown district and software orientated business parks, Bangalore truly offers a picture of modern India.



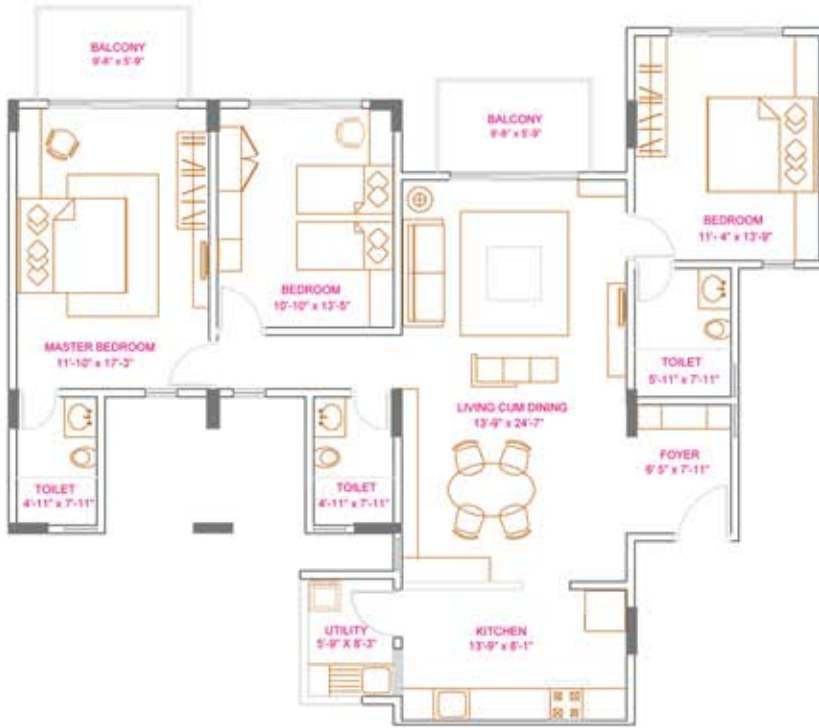
KEY FEATURE

- ✓ Spacious well organised apartments
- ✓ Swimming pool and sports courts
- ✓ Landscaped gardens with water features
- ✓ Sauna
- ✓ Gymnasium
- ✓ Wi-Fi Broadband network
- ✓ Integrated security and CCTV system
- ✓ Gated community
- ✓ Easy commute to Silicon Valley
- ✓ Excellent rental potential

FLOOR PLANS

SOUTH TOWER
 2nd, 3rd, 4th, 5th and 6th FLOOR LEVEL
 THREE BEDROOM UNIT

1790 Area (sq.ft)



SOUTH TOWER
 2nd, 3rd, 4th, 5th and 6th FLOOR LEVEL
 THREE BEDROOM UNIT

1830 Area (sq ft)

