



OVERVIEW

Welcome to San-Ference. A superb development of luxurious apartments, overlooking the small fishing village of Sutomore. Price range starting from £65,000. Most apartments have a seaview and are set in a complex of 5 outdoor pools and landscape gardens. The design aspects are modern and minimalist. The Facilities of the complex include shops, restaurant, an indoor leisure centre concept featuring pool all on site. Our private complex provides the finest living space on the Adriatic Coast. Sutomore village and beach has many restaurants and bars to cater for all tastes. Sutomore is centrally located between the towns of Bar (9km) and Petrovac (10km), which is one of the most beautiful towns on the Montenegrin Coast. For those who like to ski, there are two well known resorts within 2hrs drive of San-Ference.

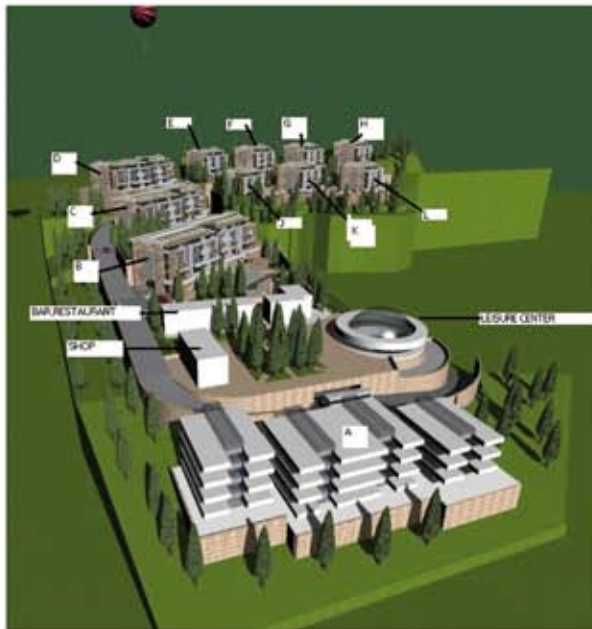


KEY FEATURES

- ✓ Gated Community
- ✓ Wellness Centre
- ✓ Gymnasium
- ✓ Treatment Rooms
- ✓ Indoor Swimming Pool
- ✓ 5 x Outdoor Pools
- ✓ Jacuzzi
- ✓ Dental Surgery
- ✓ Bar
- ✓ Restaurant
- ✓ Supermarket
- ✓ Crèche Facilities
- ✓ Hair Salon
- ✓ Multi Destination Shuttle Bus
- ✓ Air-Conditioning
- ✓ Finished to Luxurious Western Standards

LOCALITY

Arriving at Podgorica airport, you pass by Lake Skadar and then go through the Sozina tunnel which breaks through on the outskirts of Sutomore where the San Ference development is located. Sutomore beach is one of 117 beaches on the Montenegrin coastline, and is one of the most accessible beaches in Montenegro. It boasts hotels, bars, restaurants, shops and most facilities within reach of the beach. Originally a fishing village, it has become the most popular resort on the Bar Riviera. It is rich in historical sites which include the fortress of Haj Nehaj. This location is probably the best for a central base, you explore this country, as it is located at the hub of roads that will take you in any direction to places only you dreamed of.



PRICES & AVAILABILITY - SAMPLE

SAN FERENCE - AVERAGE PRICES		
Type	Sq.m.	Pounds
1 Bedroom	From: 51.85 sq.m.	From: £ 65,753
2 Bedrooms	From: 70.50 sq.m.	From: £ 99,863
3 Bedrooms	From: 100.50 sq.m.	From: £ 141,113

Including VAT

FLOOR PLANS

