



OVERVIEW

Known as the "Spanish Caribbean". Fuerteventura is a tropical paradise with magical landscapes & beaches of fine sand bathed by turquoise warm waters. Due to its exceptional weather, with an annual average temperature of 18 -24 degrees, Fuerteventura is known as the " Island with Eternal Spring". An Atlantic oasis to enjoy countless leisure options, such as golf, water sports & inland excursions. The town of Corralejo is well know for its peacefulness, its good communications – just 20 minutes away from the airport & for its great services which include shopping centres, cinemas & an Aquatic Park. Corralejo is also included in the Surf World Circuit thanks to its famous beach " The Flag Beach". Property Development is limited in the Canary Islands, unlike mainland Spain, where over development has occurred in certain areas. Dunas Park is minutes from the stunning beaches of Corralejo via the famous sand dunes of the area offering fully furnished accommodation of detached & semi-detached villas, town houses, lofts & Apartments with 100% finance.



KEY FEATURES

- ✓ 100% Finance
- ✓ Front line development
- ✓ Lagoon Style Swimming Pool
- ✓ Jacuzzis'
- ✓ Landscaped Canarian Style Gardens
- ✓ ADSL Line
- ✓ Satellite TV
- ✓ Intelligent Home System
- ✓ Perimeter Wall with Automatic Gates
- ✓ Beach Front Location
- ✓ Fully Fitted Kitchens
- ✓ Paddle Tennis Court

LOCALITY

- International Airport – 20 minutes
- Beach – 5 minutes
- Lobos Island – 5 minutes (sailing)
- Lanzarote – 20 minutes (by ferry)

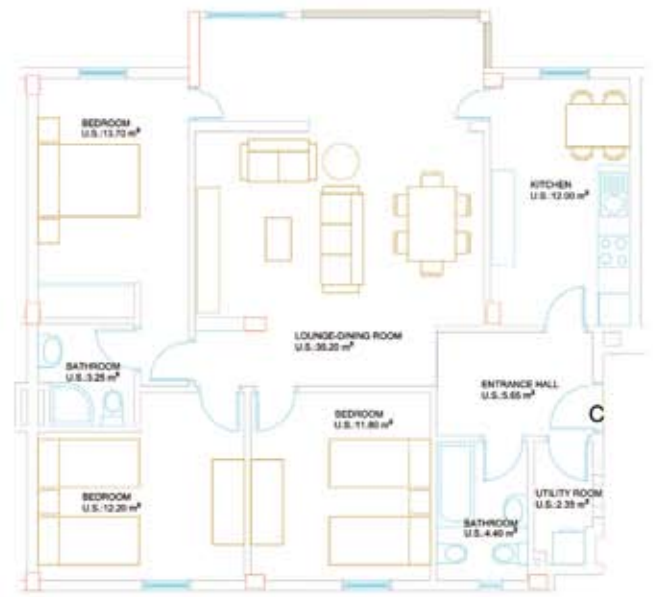
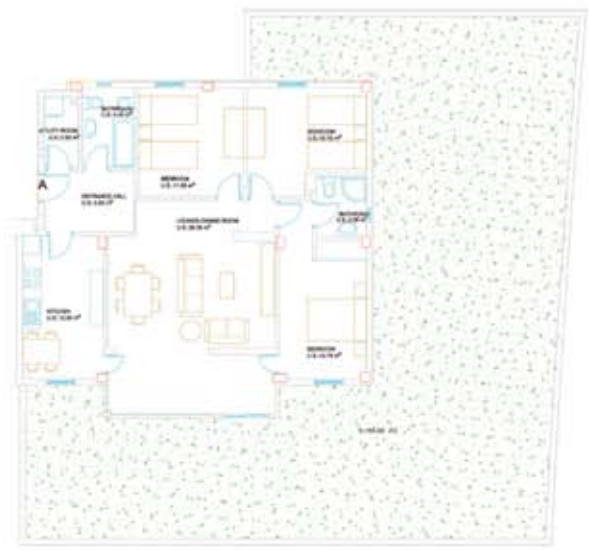
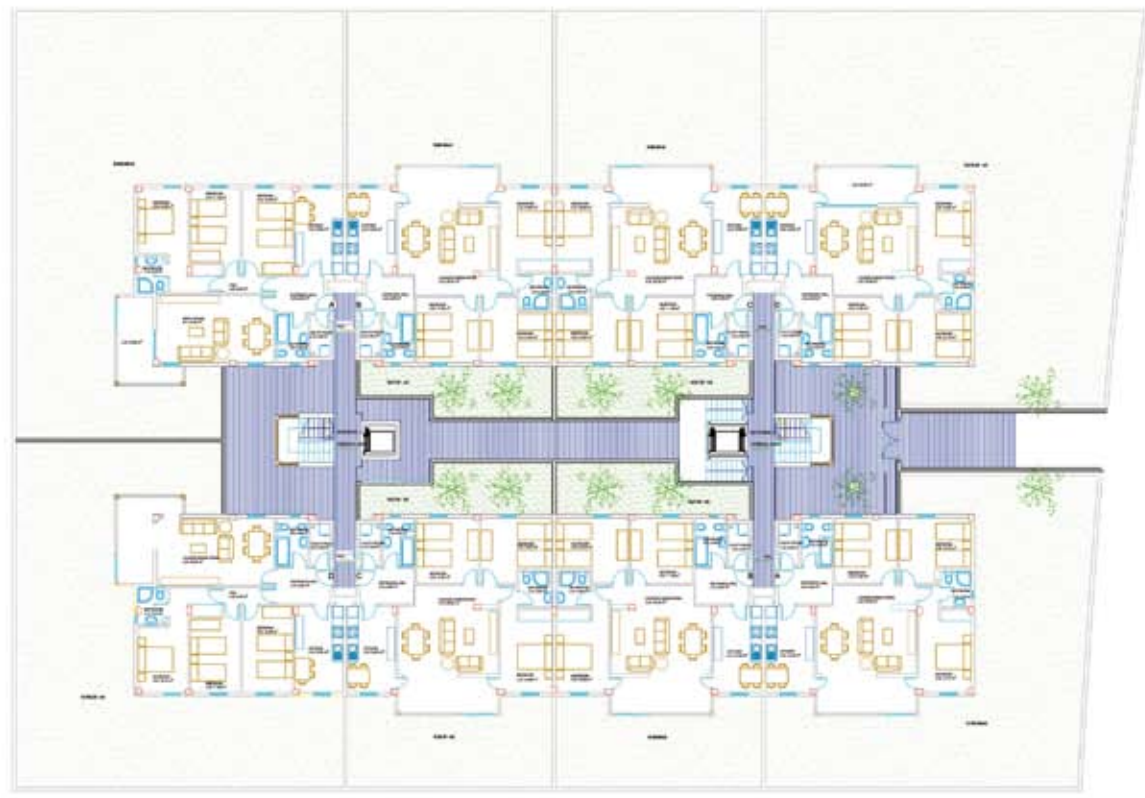


PRICES & AVAILABILITY - SAMPLE

DUNAS PARK - AVERAGE PRICES		
Type	Sq.m.	Pounds
3 Bedrooms	From: 70 sq.m.	From: £93,150
3 Bedroom Townhouse	From: 109 sq.m.	From: £157,000

Including VAT

FLOOR PLANS



FLOOR PLANS

